



Operating Instruction Manual
cifX TCP/IP Server
Remote Connection via Ethernet

Windows 2000, Windows XP, Windows Vista, Windows 7, Windows 8
V2.1.x.x

**(Windows CE V1.1.0.0, Linux V1.0.0.0, QNX V1.0.0.0,
VxWorks V1.0.0.0, IntervalZero RTX™ V1.0.0.0)**

Hilscher Gesellschaft für Systemautomation mbH

www.hilscher.com

DOC100610OI05EN | Revision 5 | English | 2013-09 | Released | Public

Table of Contents

1	INTRODUCTION.....	3
1.1	About this Manual	3
1.1.1	List of Revisions	3
1.1.2	Conventions in this Manual	4
1.1.3	Used Terminology	4
1.2	Legal Notes.....	5
1.2.1	Copyright	5
1.2.2	Important Notes	5
1.2.3	Exclusion of Liability	6
1.2.4	Warranty	6
1.2.5	Export Regulations	7
1.2.6	Registered Trademarks.....	7
1.3	About cifX TCP/IP Server	8
1.3.1	cifXTCP/IP Server for different Operating Systems	8
1.3.2	Where to find the cifXTCPServer.exe?	8
1.3.3	Reference on Driver and Software	9
1.3.4	Notes on Driver and Software Versions for cifX TCP/IP Server V2.1.x.x	9
1.3.5	Documentation cifX	9
2	CIFX TCP/IP SERVER PROGRAM	11
2.1	System Requirements SYCON.net.....	11
2.2	Requirements Remote Connection via Ethernet	12
2.3	System Overview for Remote Connection via Ethernet.....	13
2.4	Remote Download via cifX TCP/IP Server	14
2.5	Starting cifX TCP/IP Server for SYCON.net	14
2.6	Communication via cifX TCP/IP Server	15
2.7	Show Host Information	17
3	LISTS	19
3.1	List of Figures	19
3.2	List of Tables	19
4	CONTACTS.....	20

1 Introduction

1.1 About this Manual

This guide describes the requirements, the basics and the handling of the program **cifX TCP/IP Server for SYCON.net** and for its user interface TCP/IP Server for cifX for the TCP/IP communication.

The description is exemplified for the cifX TCP/IP server for Windows® 32 systems 2000, XP or Vista and is valid as well for the cifX TCP/IP Server for Windows® CE, Linux, QNX, VxWorks and IntervalZero RTX™. The section *System Requirements* on page 11 and the section *Remote Download via cifX TCP/IP Server* on page 14 refer only to those Windows® systems.

1.1.1 List of Revisions

Index	Date	Version	Chapter	Revision
5	2013-09-23	Windows 2000, Windows XP, Windows Vista, Windows 7, Windows 8 V2.1.0.0 (Windows CE V1.1.0.0, Linux V1.0.0.0, QNX V1.0.0.0, VxWorks V1.0.0.0, IntervalZero RTX™ V1.0.0.0)	All	Windows 8 added

1.1.2 Conventions in this Manual

Notes, operation instructions and results of operation steps are marked as follows:

Notes



Important: <important note>



Note: <note>



<note, where to find further information>

Operation Instructions

1. <instruction>

2. <instruction>

or

➤ <instruction>

Results

↻ <result>

1.1.3 Used Terminology

cifX TCP/IP Server *cifX TCP Server.exe*

Program for the remote diagnostics via Ethernet.

Name: **cifX TCP/IP Server for SYCON.net**

User Interface: **TCP/IP Server for cifX**

1.2 Legal Notes

1.2.1 Copyright

© Hilscher, 2010-2013, Hilscher Gesellschaft für Systemautomation mbH

All rights reserved.

The images, photographs and texts in the accompanying material (user manual, accompanying texts, documentation, etc.) are protected by German and international copyright law as well as international trade and protection provisions. You are not authorized to duplicate these in whole or in part using technical or mechanical methods (printing, photocopying or other methods), to manipulate or transfer using electronic systems without prior written consent. You are not permitted to make changes to copyright notices, markings, trademarks or ownership declarations. The included diagrams do not take the patent situation into account. The company names and product descriptions included in this document may be trademarks or brands of the respective owners and may be trademarked or patented. Any form of further use requires the explicit consent of the respective rights owner.

1.2.2 Important Notes

The user manual, accompanying texts and the documentation were created for the use of the products by qualified experts, however, errors cannot be ruled out. For this reason, no guarantee can be made and neither juristic responsibility for erroneous information nor any liability can be assumed. Descriptions, accompanying texts and documentation included in the user manual do not present a guarantee nor any information about proper use as stipulated in the contract or a warranted feature. It cannot be ruled out that the user manual, the accompanying texts and the documentation do not correspond exactly to the described features, standards or other data of the delivered product. No warranty or guarantee regarding the correctness or accuracy of the information is assumed.

We reserve the right to change our products and their specification as well as related user manuals, accompanying texts and documentation at all times and without advance notice, without obligation to report the change. Changes will be included in future manuals and do not constitute any obligations. There is no entitlement to revisions of delivered documents. The manual delivered with the product applies.

Hilscher Gesellschaft für Systemautomation mbH is not liable under any circumstances for direct, indirect, incidental or follow-on damage or loss of earnings resulting from the use of the information contained in this publication.

1.2.3 Exclusion of Liability

The software was produced and tested with utmost care by Hilscher Gesellschaft für Systemautomation mbH and is made available as is. No warranty can be assumed for the performance and flawlessness of the software for all usage conditions and cases and for the results produced when utilized by the user. Liability for any damages that may result from the use of the hardware or software or related documents, is limited to cases of intent or grossly negligent violation of significant contractual obligations. Indemnity claims for the violation of significant contractual obligations are limited to damages that are foreseeable and typical for this type of contract.

It is strictly prohibited to use the software in the following areas:

- for military purposes or in weapon systems;
- for the design, construction, maintenance or operation of nuclear facilities;
- in air traffic control systems, air traffic or air traffic communication systems;
- in life support systems;
- in systems in which failures in the software could lead to personal injury or injuries leading to death.

We inform you that the software was not developed for use in dangerous environments requiring fail-proof control mechanisms. Use of the software in such an environment occurs at your own risk. No liability is assumed for damages or losses due to unauthorized use.

1.2.4 Warranty

Although the hardware and software was developed with utmost care and tested intensively, Hilscher Gesellschaft für Systemautomation mbH does not guarantee its suitability for any purpose not confirmed in writing. It cannot be guaranteed that the hardware and software will meet your requirements, that the use of the software operates without interruption and that the software is free of errors. No guarantee is made regarding infringements, violations of patents, rights of ownership or the freedom from interference by third parties. No additional guarantees or assurances are made regarding marketability, freedom of defect of title, integration or usability for certain purposes unless they are required in accordance with the law and cannot be limited. Warranty claims are limited to the right to claim rectification.

1.2.5 Export Regulations

The delivered product (including the technical data) is subject to export or import laws as well as the associated regulations of different countries, in particular those of Germany and the USA. The software may not be exported to countries where this is prohibited by the United States Export Administration Act and its additional provisions. You are obligated to comply with the regulations at your personal responsibility. We wish to inform you that you may require permission from state authorities to export, re-export or import the product.

1.2.6 Registered Trademarks

Windows[®] 2000, Windows[®] XP, Windows[®] Vista, Windows[®] 7 and Windows[®] 8 are registered trademarks of Microsoft Corporation.

Linux is a registered trademark of Linus Torvalds.

QNX is a registered trademark of QNX Software Systems, Ltd.

VxWorks is a registered trademark of Wind River Systems, Inc.

IntervalZero RTX[™] is a trademark of IntervalZero.

All other mentioned trademarks are property of their respective legal owners.

1.3 About cifX TCP/IP Server

1.3.1 cifXTCP/IP Server for different Operating Systems

The cifX TCP/IP Server is available for the following operating systems:

Operating System	Software Version cifX TCP/IP Server
Windows® CE	V1.1.0.0
Windows® 2000, Windows® XP, Windows® Vista, Windows® 7, Windows® 8	V2.1.0.0
Linux	V1.0.0.0
QNX	V1.0.0.0
VxWorks	V1.0.0.0
IntervalZero RTX™	V1.0.0.0

Table 1: cifX TCP/IP Server for different Operating Systems

1.3.2 Where to find the cifXTCPServer.exe?

The program **cifX TCP/IP Server for SYCON.net** can be opened via the *cifXTCPServer.exe* file. This one can be found on the cifX DVD in the directory *tools\cifXTCPServer* or on the corresponding driver CD in the directory *Sources\cifXTCPServer* as given in the subsequent table:

Operating System	Product DVD	Driver CD	Revision DVD / CD	Directory
Windows® CE	-	NXDRV-CE	2012-04-1	Driver\CE6.0\Application\cifXTCPServer
Windows® 2000, Windows® XP, Windows® Vista, Windows® 7, Windows® 8	CIFX, Communi- cation Solutions DVD	-	2013-12-1	Tools\cifXTCPServer\
Linux	-	NXDRV-Linux	2013-03-1	Examples\cifXTCPServer
QNX	-	NXDRV-QNX	2013-03-1	Sources\cifXTCPServer\
VxWorks	-	NXDRV-VXWorks	2010-06-1	Driver\VxWorks 6.2\WindRiver_Workbench\cifXTCPServer
IntervalZero RTX™	-	NXDRV-RTX	2013-03-1	Examples\cifXTCPServer

Table 2: cifX TCP/IP Server for different Operating Systems

For the operating systems Linux, Windows® CE, VxWorks, QNX and IntervalZero RTX™ you can buy Device Driver at the company Hilscher Gesellschaft für Systemautomation mbH www.hilscher.com.

1.3.3 Reference on Driver and Software

1.3.4 Notes on Driver and Software Versions for cifX TCP/IP Server V2.1.x.x



Note: The versions for the cifX TCP/IP Server V2.1.x.x, the driver or the configuration software listed in this section, functionally belong together.

Driver and Software		Version
cifX TCP/IP Server	cifX TCP Server.exe	V2.1.x.x
cifX Device Driver	cifX Device Driver Setup.exe	V1.2.x.x
SYCON.net	SYCONnet netX setup.exe	V1.360.x.x
netX Configuration Tool-Setup	netX Configuration Tool.exe	V1.0510.x.x

Table 3: Reference on Driver and Software for cifX TCP/IP Server V2.1.x.x

1.3.5 Documentation cifX

The following documentation overview gives information, for which items you can find further information in which manual.



All these documents are available on the Communication Solutions DVD delivered with the device underneath the directory **Documentation**, in Adobe Acrobat® Reader format (PDF). You can also use the latest edition of a manual, which is available on the website www.hilscher.com under **Support > Downloads > Manuals** or under **Products** directly with the information about your product.

For the PC Cards cifX on the Communication Solutions DVD the following manuals are available for you in the Adobe-Acrobat® Reader format (PDF):

Autostart Menu	Path on the DVD Documentation\..	Required	Document Type	Title	Document ID	File Name
Documentation > PC Cards - cifX	1. cifX Manuals\EN\	yes	User Manual	PC Cards cifX PCI (CIFX 50), PCI Express (CIFX 50E), Low Profile PCI Express (CIFX 70E, CIFX 100EH)	DOC120204UMXXEN	PC Cards CIFX 50 CIFX50E CIFX70E UM XX EN.pdf
		yes	User Manual	PC Cards cifX Compact PCI (CIFX80), Mini PCI (CIFX90), Mini PCI Express (CIFX 90E), PCI-104 (CIFX 104C)	DOC120205UMXXEN	PC Cards CIFX 80 90 90E 104C UM XX EN.pdf
		yes	User Manual	PC Cards cifX PC/104 (CIFX 104)	DOC120206UMXXEN	PC Cards CIFX 104 UM XX EN.pdf
		yes	User Manual	Software Installation for the PC Cards cifX, Installing Drivers and Configuration Software	DOC120207UMXXEN	PC Cards cifX Software Installation UM XX EN.pdf
Documentation > Configuration Manuals	5. Configuration Manuals\EN\					
	5. cifX TCP Server	optional	Operating Instruction Manual	cifX TCP/IP-Server, Remote Connection via Ethernet	DOC100610OIXXEN	cifX TCP IP Server OI XX EN.pdf
Documentation > Driver Manuals	6. Device Driver Manuals\EN\Installation	yes	Operating Instruction Manual	cifX Device Driver, Installation and Operation for Windows XP/Vista/7/8, V 1.2.x.x	DOC060601OIXXEN	cifX Device Driver Installation for Windows OI XX EN.pdf

Table 4: Documentations for PC Cards cifX

2 cifX TCP/IP Server Program

The program **cifX TCP/IP Server for SYCON.net** allows remote diagnostics via Ethernet. Therefore a PC card cifX installed in PC 2 (local PC) is accessed with use of the configuration software **SYCON.net** from PC 1 (remote computer) via a TCP/IP network (Ethernet).

Depending on the operating system of the remote PC (PC 1), from the remote PC, the firmware file or configuration file are automatically stored via the cifX TCP/IP Server on the file system of the local PC (PC 2). The possibility of remote downloads is currently only available for the systems Windows® 2000 / Windows® XP / Windows® Vista / Windows® 7. For Linux, QNX, VxWorks and IntervalZero RTX™, please refer to the appropriate driver-guides for how to handle the firmware download and configuration download.

2.1 System Requirements SYCON.net

The system requirements listed below are valid for the configuration software **SYCON.net for netX**:

- PC with 1 GHz processor or higher
- Windows® XP SP3, Windows® Vista (32 bit) SP2, Windows® 7 (32 bit) SP1, Windows® 7 (64 bit), Windows® 8 (32 bit) or Windows® 8 (64 bit)
- Administrator privilege required for installation
- Internet Explorer 5.5 or higher
- Free disk space: min. 400 MByte
- DVD ROM drive
- RAM: min. 512 MByte, recommended 1024 MByte
- Graphic resolution: min. 1024 x 768 pixel
- Keyboard and Mouse
- USB (optional)



Note: If the project file is saved and opened again or if it is used on another PC, the system requirements must match. Particularly the DTM must be installed on the used PC.

Restriction

Touch screen is not supported.

2.2 Requirements Remote Connection via Ethernet

The following requirements must be valid to allow to access from PC 1 (remote PC) via TCP/IP to the PC card cifX in PC 2:

No	PC 1 (Remote PC)	PC 2 (local PC)
Hardware Installation		
1	PC 1 (remote PC) and PC 2 (local PC) must be connected via TCP/IP, i. e. via an Ethernet network cable.	
2		The PC card cifX must be installed in the PC 2.
Software Installation		
3		The cifX Device Driver (from V1.0.x.x) must be installed on the PC 2.
4	The configuration software SYCON.net must be installed on the PC 1 (Remote PC).	<u>Only for cifX TCP/IP Server before version 2.1.0.0:</u> For versions of the cifX TCP/IP Server before version 2.1.0.0 on PC 2, the configuration software SYCON.net must be installed or another application program, to allow a firmware download or a configuration download to the PC card cifX (Master). For a PC card cifX (Slave) alternatively the program netX Configuration Tool can be installed on PC 2 to allow the download.
Operation		
5		The PC card cifX must be ready in PC 2, i. e., the firmware and the configuration must be loaded already to the PC card cifX.
6		The program cifX TCP/IP Server for SYCON.net must be executed on the PC 2.
7	The configuration software SYCON.net must be started on the PC 1 (Remote PC).	
8	For Master devices: From the Master DTM in PC 1 (Remote PC) an online connection to the Master device in PC 2 must be established via the cifX TCP/IP server. For Slave devices: From the Slave DTM in PC 1 (Remote PC) an online connection to the Slave device in PC 2 must be established via the cifX TCP/IP server.	

Table 5: Requirements Remote Connection via Ethernet

2.4 Remote Download via cifX TCP/IP Server

PC cards cifX are not using any flash memory to store a firmware or configuration on the PC card. Every time the PC card is powered-up the firmware and configuration must be downloaded to the PC card cifX hardware. For this reason a firmware file or a configuration file need to be stored from the remote PC (PC 1) via the cifX TCP/IP Server on the local PC (PC 2).



Note: The storage of the firmware file or the configuration file is done automatically by the cifX TCP/IP Server depending on the operating system the remote machine is running with. Currently, the automatic download is only supported by the Windows® CE, Windows® 2000, Windows® XP, Windows® Vista und Windows® 7 versions of the cifX TCP/IP server.



For detailed information about the firmware and configuration file storage for Windows® CE, Windows® 2000, Windows® XP, Windows® Vista und Windows® 7 please consult the operating instruction manual **cifX Device Driver** on the product DVD of your PC card cifX. Therefore refer to section *Documentation cifX* on page 9.

For Linux, QNX, VxWorks and IntervalZero RTX™ please refer to the corresponding driver manual how to proceed the firmware and configuration download.



Note: After a firmware download the PC card cifX needs to be restarted so the firmware update can take effect. This restart cannot be processed via the remote machine and thus must be performed manually on the local machine.

2.5 Starting cifX TCP/IP Server for SYCON.net

The program **cifX TCP/IP Server for SYCON.net** must not be installed, but need only be executed.

- Therefore start the *cifXTCPServer.exe* file.

2.6 Communication via cifX TCP/IP Server

To connect the PC 1 (remote PC) to the PC card cifX in PC 2 via an Ethernet connection, the requirements of section *Requirements* on page 12 must be fulfilled.

How to proceed:

1. Start the configuration software **SYCON.net** on PC 1 (remote PC).
2. Start the *cifXTCPServer.exe* file on PC 2.
- On PC 2 the window **TCP/IP Server for cifX** is displayed:

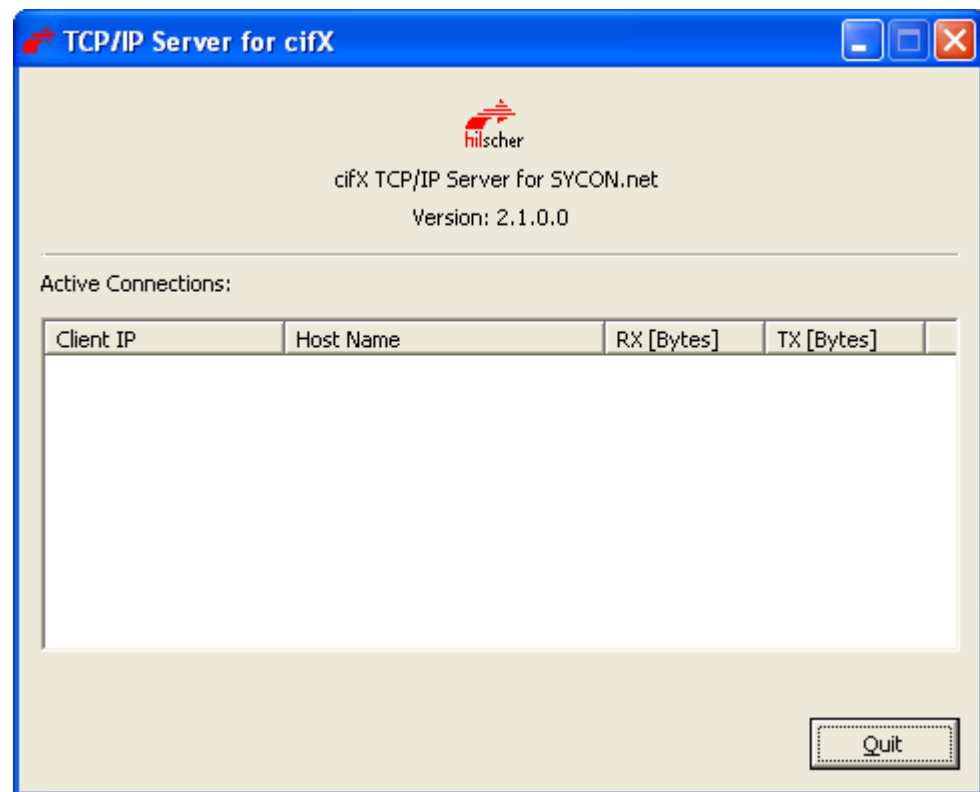


Figure 2: Window „TCP/IP Server for cifX“ (on PC 2), no TCP/IP Connection

3. In the configuration software **SYCON.net** on PC 1 (remote PC) establish an online connection from the DTM in PC 1 (remote PC) to the PC card cifX in PC 2.



For detailed information refer to the online help of the configuration software SYCON.net or of the DTM.

For Master Devices:

- Establish an online connection from the Master DTM in PC 1 (remote PC) to the Master device in PC 2.

For Slave Devices:

- Establish an online connection from the Slave DTM in PC 1 (remote PC) to the Slave device in PC 2.

- The Ethernet connection from the DTM in PC 1 (remote PC) to the PC card cifX in PC 2 is displayed in the **TCP/IP Server for cifX** window:

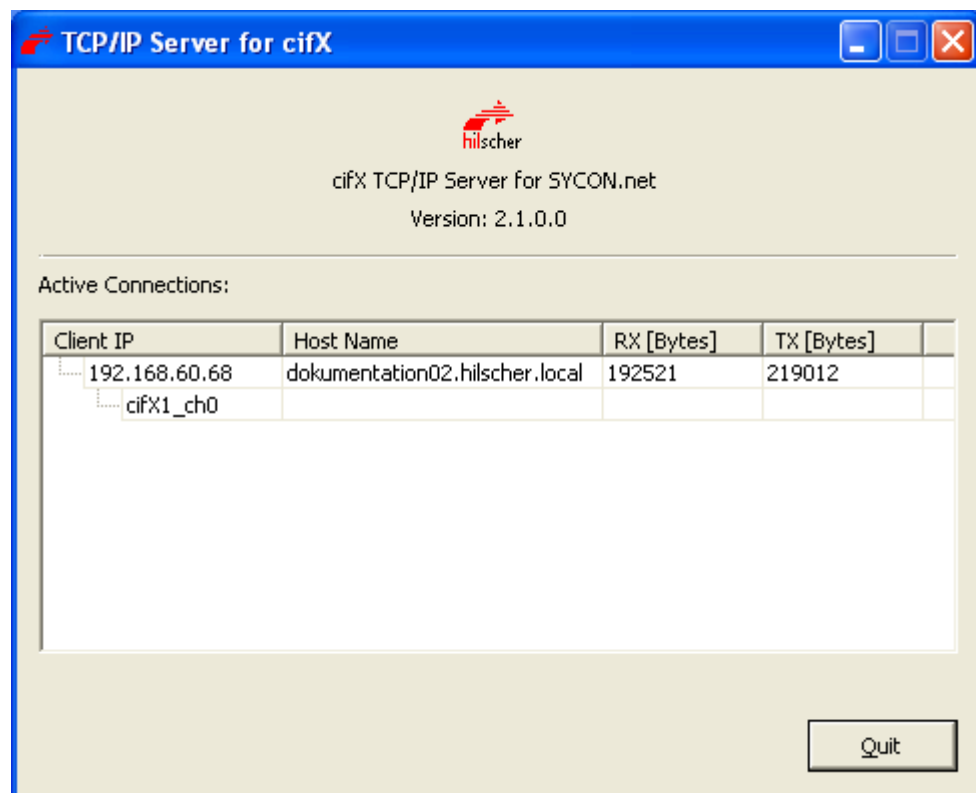


Figure 3: Window „TCP/IP Server for cifX“ (on PC 2), TCP/IP Connection to the PC card cifX 1/ Channel°0

Item	Description
Active Connections	All active Ethernet connections from a remote computer (in the example PC 1) via the cifX TCP/IP server to a PC card cifX in another PC (PC 2 in the example) are displayed.
Client IP	The IP address of the remote PC is displayed (in the example, PC 1: 192.168.6068). In addition, the card identification cifX[card ID 0 ... N] and the occupied channel _ch[channel-number 0 ... 5] (in the example cifX1_ch0) are displayed. Without firmware and configuration download to the card, only the system channel "_SYS" is displayed (for example cifX0_SYS).
Host Name	Name of the remote PC in the network
RX [Bytes]	Receive data in [Bytes]
TX [Bytes]	Transfer data in [Bytes]

Table 6: Description Window „TCP/IP Server for cifX“

2.7 Show Host Information

- In the user interface **TCP/IP Server for cifX** select **Show Host Information** ①:

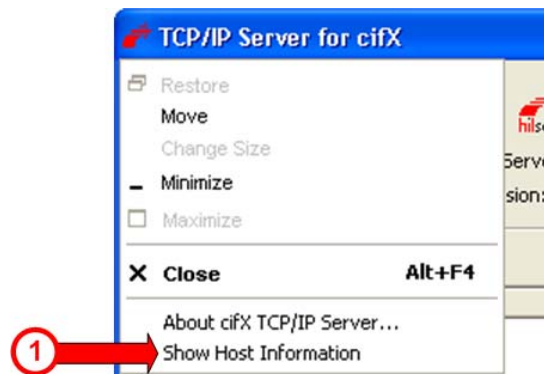


Figure 4: Show Host Information

- The window **Host Information** displays the host information for the PC cards cifX that are installed in the system to which the particular TCP/IP server accesses. For each device, the host information **Alias**, **Device Number**, **Serial Number**, **Channels** and **DPM Size** are displayed.

For more see next page

The figure below shows the data for the two sample devices **cifX0** ^② and **cifX1** ^③.

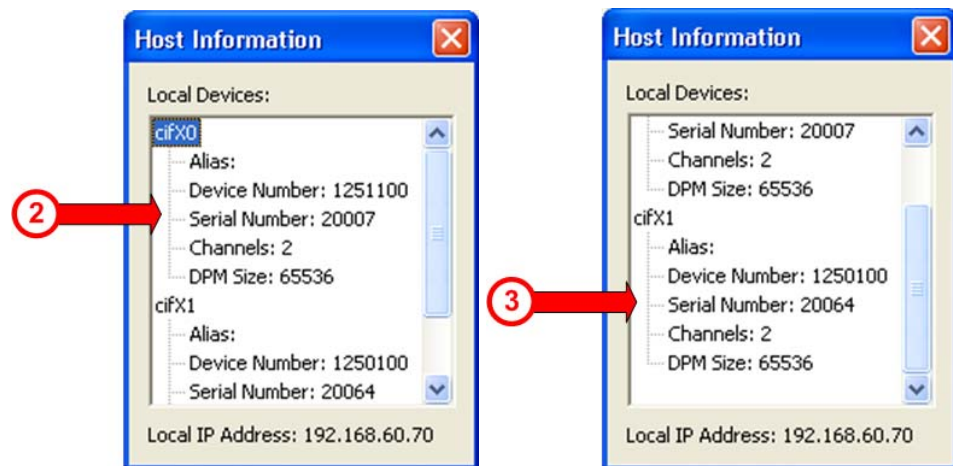


Figure 5: Host Information of Example Devices

Item	Description
Local Devices	Devices installed in the local computer
cifX0, cifX1 ...	Device name in the cifX Driver Setup Utility of the currently by the driver identified device.
Alias	As Alias you can enter in the cifX Driver Setup Utility a separate name for the device.
Device-Number	Number of the device
Serial Number	Serial number of the device
Channels	Number of the Communication channels used
DPM Size	Size of the Dual-Port Memory
Local IP Address	IP address of the local PC in the network.

Table 7: Description Window „Host Information“

3 Lists

3.1 List of Figures

Figure 1: System Overview cifX (Master or Slave) with Remote Connection via Ethernet	13
Figure 2: Window „TCP/IP Server for cifX“ (on PC 2), no TCP/IP Connection	15
Figure 3: Window „TCP/IP Server for cifX“ (on PC 2), TCP/IP Connection to the PC card cifX 1/ Channel°0	16
Figure 4: Show Host Information	17
Figure 5: Host Information of Example Devices	18

3.2 List of Tables

Table 1: cifX TCP/IP Server for different Operating Systems	8
Table 2: cifX TCP/IP Server for different Operating Systems	8
Table 3: Reference on Driver and Software for cifX TCP/IP Server V2.1.x.x	9
Table 4: Documentations for PC Cards cifX	10
Table 5: Requirements Remote Connection via Ethernet	12
Table 6: Description Window „TCP/IP Server for cifX“	16
Table 7: Description Window „Host Information“	18

4 Contacts

Headquarters

Germany

Hilscher Gesellschaft für
Systemautomation mbH
Rheinstrasse 15
65795 Hattersheim
Phone: +49 (0) 6190 9907-0
Fax: +49 (0) 6190 9907-50
E-Mail: info@hilscher.com

Support

Phone: +49 (0) 6190 9907-99
E-Mail: de.support@hilscher.com

Subsidiaries

China

Hilscher Systemautomation (Shanghai) Co. Ltd.
200010 Shanghai
Phone: +86 (0) 21-6355-5161
E-Mail: info@hilscher.cn

Support

Phone: +86 (0) 21-6355-5161
E-Mail: cn.support@hilscher.com

France

Hilscher France S.a.r.l.
69500 Bron
Phone: +33 (0) 4 72 37 98 40
E-Mail: info@hilscher.fr

Support

Phone: +33 (0) 4 72 37 98 40
E-Mail: fr.support@hilscher.com

India

Hilscher India Pvt. Ltd.
New Delhi - 110 065
Phone: +91 11 26915430
E-Mail: info@hilscher.in

Italy

Hilscher Italia S.r.l.
20090 Vimodrone (MI)
Phone: +39 02 25007068
E-Mail: info@hilscher.it

Support

Phone: +39 02 25007068
E-Mail: it.support@hilscher.com

Japan

Hilscher Japan KK
Tokyo, 160-0022
Phone: +81 (0) 3-5362-0521
E-Mail: info@hilscher.jp

Support

Phone: +81 (0) 3-5362-0521
E-Mail: jp.support@hilscher.com

Korea

Hilscher Korea Inc.
Seongnam, Gyeonggi, 463-400
Phone: +82 (0) 31-789-3715
E-Mail: info@hilscher.kr

Switzerland

Hilscher Swiss GmbH
4500 Solothurn
Phone: +41 (0) 32 623 6633
E-Mail: info@hilscher.ch

Support

Phone: +49 (0) 6190 9907-99
E-Mail: ch.support@hilscher.com

USA

Hilscher North America, Inc.
Lisle, IL 60532
Phone: +1 630-505-5301
E-Mail: info@hilscher.us

Support

Phone: +1 630-505-5301
E-Mail: us.support@hilscher.com